

24 25 26 27 28 29 45

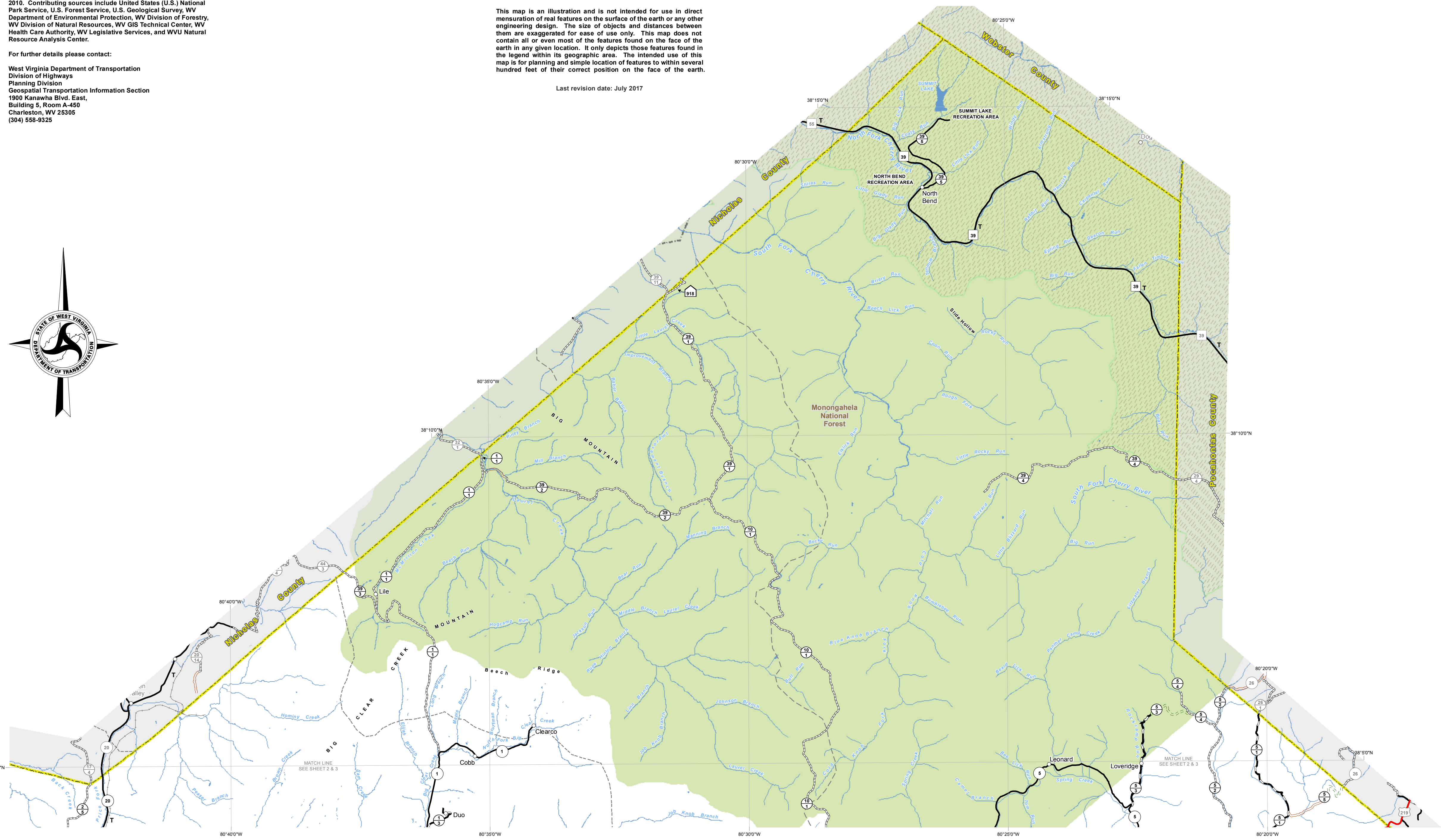
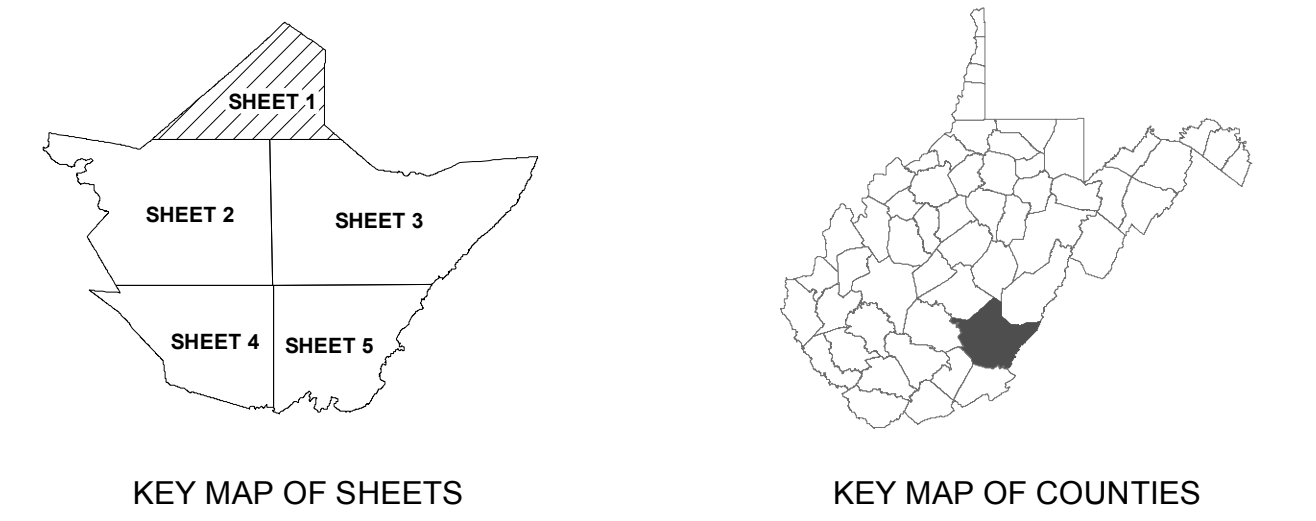
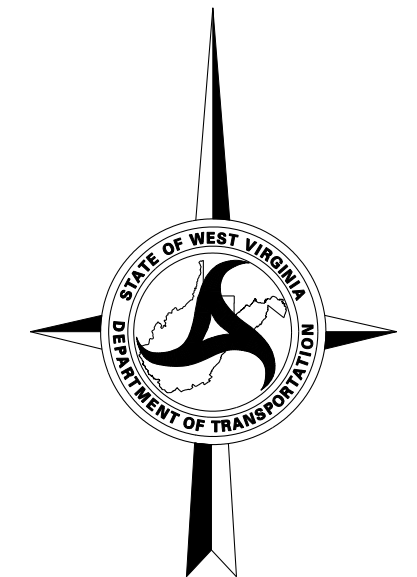
All routes are provided by West Virginia (WV) Department of Transportation. Urban Areas, corporation lines, and population data are from the U.S. Census Bureau for census years 2000 and 2010. Contributing sources include United States (U.S.) National Park Service, U.S. Forest Service, U.S. Geological Survey, WV Department of Environmental Protection, WV Division of Forestry, WV Division of Natural Resources, WV GIS Technical Center, WV Health Care Authority, WV Legislative Services, and WVU Natural Resource Analysis Center.

Coordinate System: North American Datum of 1983, Universal Transverse Mercator Zone 17N (NAD_1983_UTM_Zone_17N)

This map is an illustration and is not intended for use in direct mensuration of real features on the surface of the earth or any other engineering design. The size of objects and distances between them are exaggerated for ease of use only. This map does not contain all or even most of the features found on the face of the earth in any given location. It only depicts those features found in the legend within its geographic area. The intended use of this map is for planning and simple location of features to within several hundred feet of their correct position on the face of the earth.

Last revision date: July 2017

For further details please contact:
West Virginia Department of Transportation
Division of Highways
Planning Division
Geospatial Transportation Information Section
1900 Kanawha Blvd. East,
Building 5, Room A-450
Charleston, WV 25305
(304) 558-9325



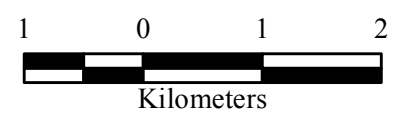
LEGEND

ROADS AND ROADWAY FEATURES	BOUNDARIES
SURFACE TYPES	County Boundary
Paved Road	State Line
Bituminous Road - Low Type	Urban Areas
Gravel or Stone Road	County Seat
Graded and Drained Road	Populated Places
Soil Surface Road - Dirt	Incorporated Places
Primitive Road	Tax District
Unimproved Road	
HIGHWAY SIGN SYSTEMS	CONSERVATION AND RECREATION
Interstate Route	National Wildlife Refuge
US Numbered Highway	U.S. Fish and Wildlife Service
WV Numbered Highway	Wildlife Management Area
WV County Route	City or County Park
WV Home Access Route (HARP)	National Forests
Federal Aid Non-State (FANS)	State Park or Forest
WV State Park and Forest Route	National Parks
City Streets	Rails to Trails
Interstate Exits	STRUCTURES
Expressway	Tunnel
Trunkline	EDUCATIONAL AND PUBLIC SERVICE
Feeder	Hospital
Airport Runway	High School
Railroad	School K - 8
WV DOT County Headquarters	College or Educational Institution
Park and Ride	County Courthouse
Rest Area	DRAINAGE
	Streams
	Major Rivers
	Lakes
	Island/Intermittent water

2017 GENERAL HIGHWAY MAP GREENBRIER COUNTY WEST VIRGINIA

PREPARED BY
WEST VIRGINIA DEPARTMENT OF TRANSPORTATION
PLANNING DIVISION

IN COOPERATION WITH
US DEPARTMENT OF TRANSPORTATION
FEDERAL HIGHWAY ADMINISTRATION



1 inch = 1 mile

This map was developed by the West Virginia Department of Transportation (WVDOT) Geospatial Transportation Information Section and is provided for general reference only. The WVDOT does not guarantee the accuracy, completeness, or currentness of any information presented and disclaims any warranties, whether expressed or implied. Users who rely on the information contained in this map do so at their own risk. The WVDOT and its agents will not be held liable for inaccurate, outdated, or otherwise erroneous information, or for damages arising, whether directly or indirectly, from use or misuse of this map or any data contained herein.

24 25 26 27 28 29 45