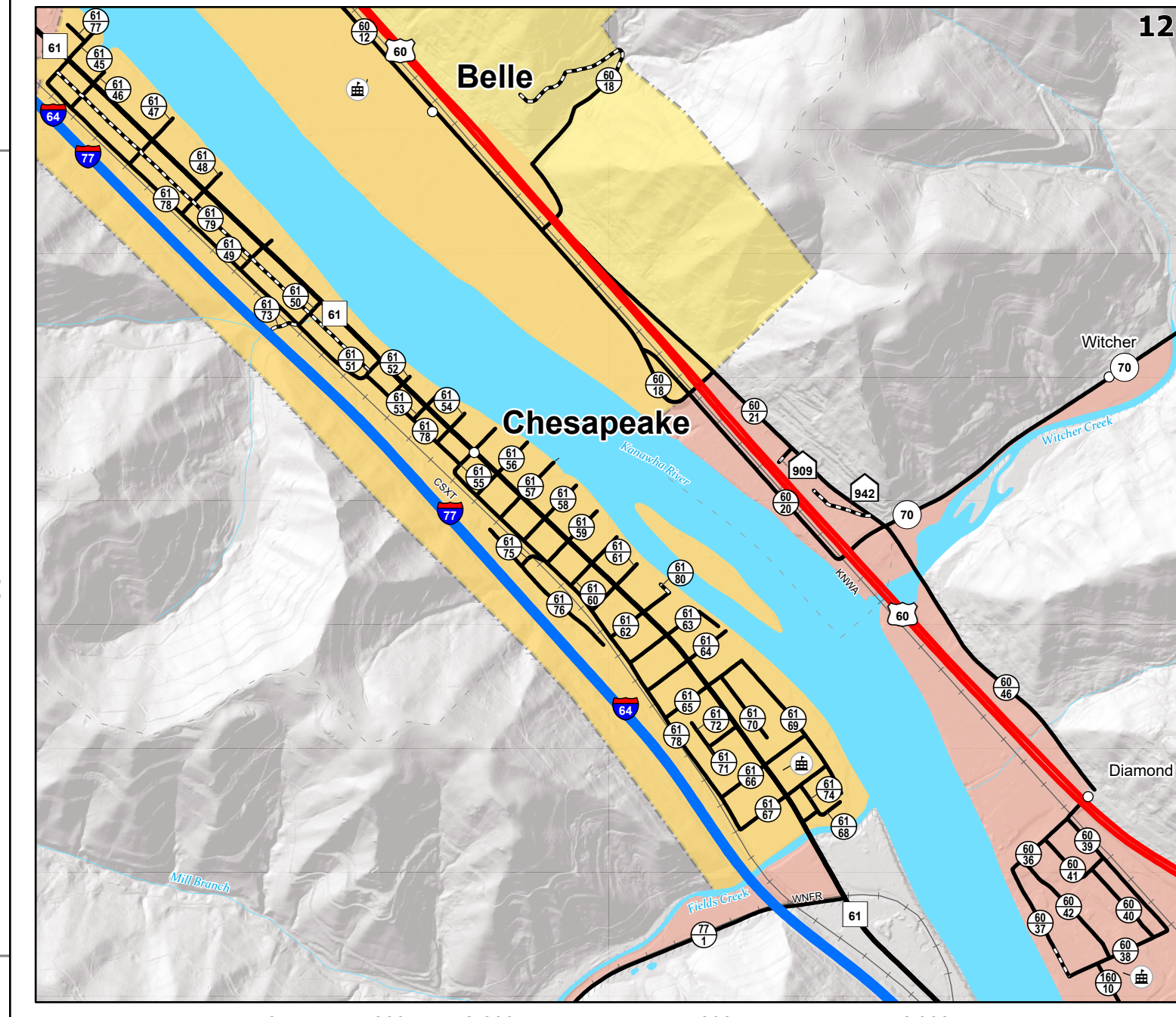
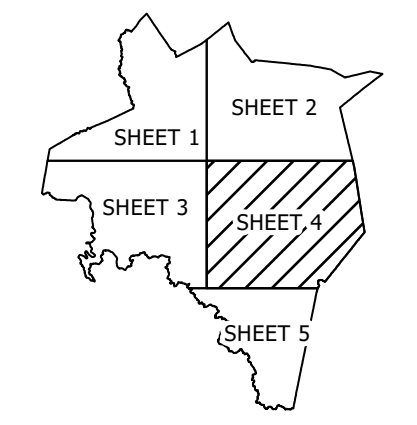
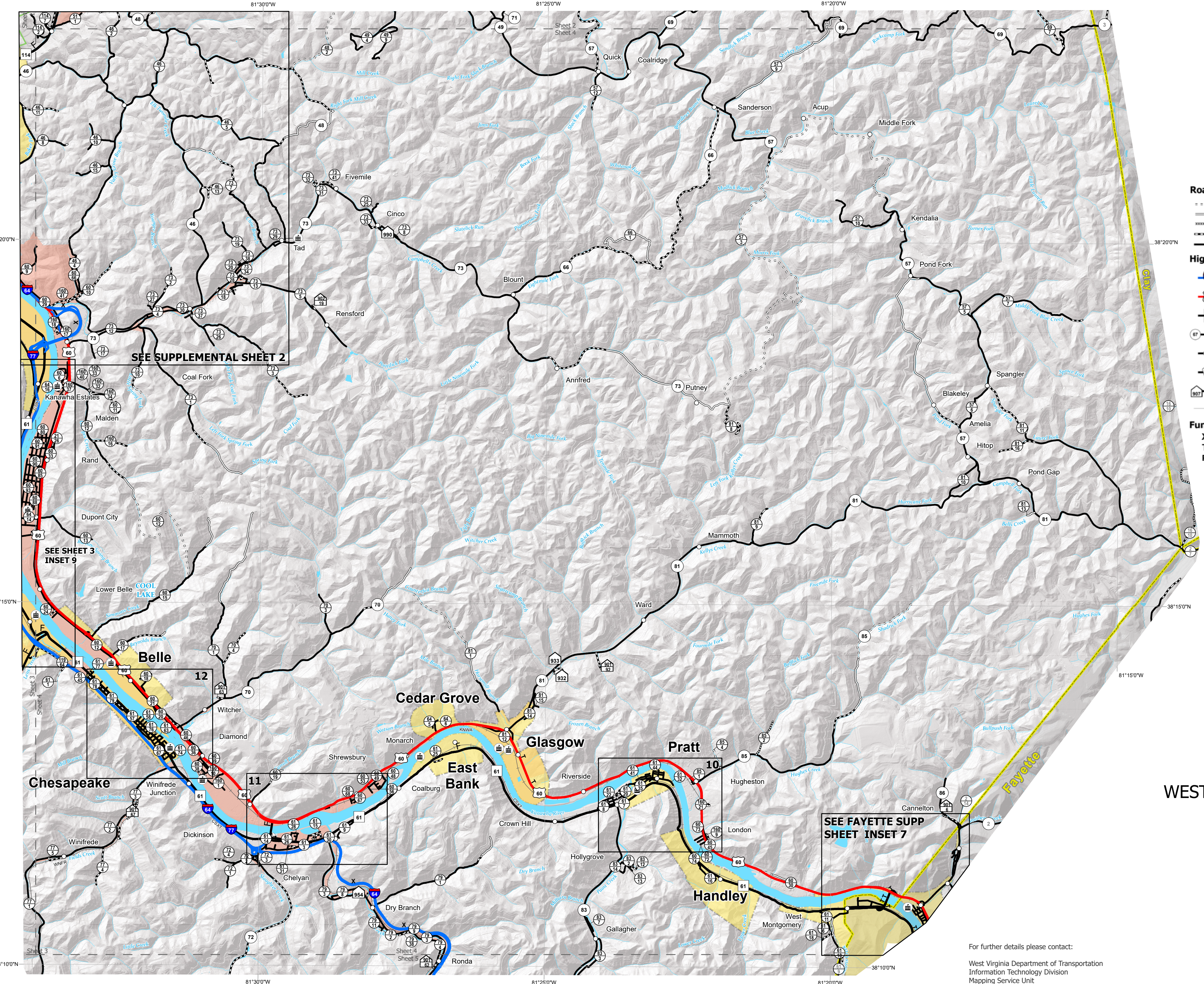


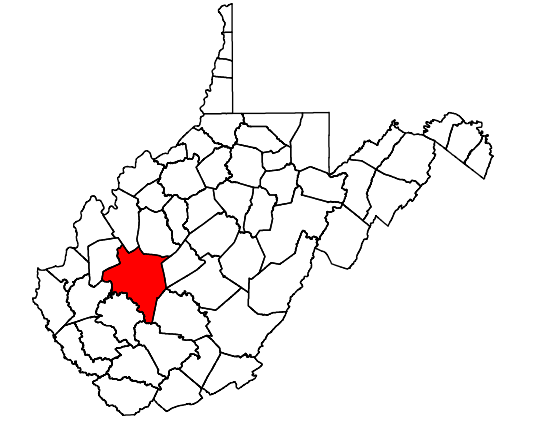
SCALE OF INSETS 10 & 11



SCALE OF INSET 12



KEY MAP OF SHEETS



KEY MAP OF COUNTIES

Roadway Surface Types	Hydrologic Features	Public Service Points
--- Primitive	● Lake or Pond	○ County Seat
--- Unimproved	● Interim Water	○ Populated Place
--- Soil Surface - Dirt	● Rivers	⊕ District HQ
--- Gravel or Stone	● Streams	⊕ County/Local HQ
--- Paved	● Lock or Dam	⊕ Rest Area
		⊕ Park & Ride
		⊕ K-8 School
		⊕ High School
		⊕ Higher Education
		⊕ Hospital
		⊕ County Courthouse
		Other Transportation Facilities
		--- Railroad
		--- Rail Trail
		--- Tunnel
		--- Airport Runway
		⊕ Interstate Exit

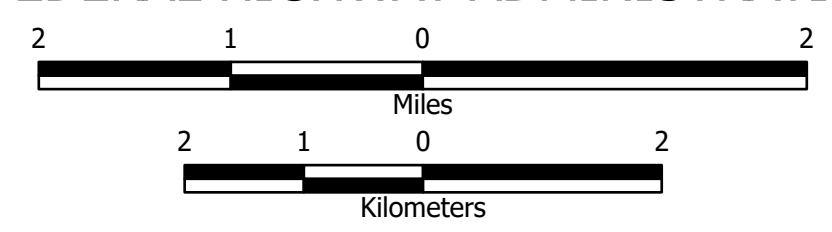
This map was developed by the West Virginia Department of Transportation (WVDOT) Information Technology Division and is provided for general reference only. The WVDOT does not guarantee the accuracy, completeness, or currentness of any information presented and disclaims any warranties, whether expressed or implied. Users who rely on the information contained in this map do so at their own risk. The WVDOT and its agents will not be held liable for inaccurate, outdated, or otherwise erroneous information, or for damages arising, whether directly or indirectly, from use or misuse of this map or any data contained herein.

All routes are provided by West Virginia (WV) Department of Transportation. Urban Areas, corporation lines, and population data are from the U.S. Census Bureau for census years 2000 and 2010. Contributing sources include United States (U.S.) National Park Service, U.S. Forest Service, U.S. Geological Survey, WV Department of Environmental Protection, WV Division of Forestry, WV Division of Natural Resources, WV GIS Technical Center, WV Health Care Authority, WV Legislative Services, and WVU Natural Resource Analysis Center.

This map is an illustration and is not intended for use in direct mensuration of real features on the surface of the earth or any other engineering design. The size of objects and distances between them are exaggerated for ease of use only. This map does not contain all or even most of the features found on the face of the earth in any given location. It only depicts those features found in the legend within its geographic area. The intended use of this map is for planning and simple location of features to within several hundred feet of their correct position on the face of the earth.

GENERAL HIGHWAY MAP KANAWHA COUNTY WEST VIRGINIA

PREPARED BY
WEST VIRGINIA DEPARTMENT OF TRANSPORTATION
INFORMATION TECHNOLOGY DIVISION
IN COOPERATION WITH
US DEPARTMENT OF TRANSPORTATION
FEDERAL HIGHWAY ADMINISTRATION



1 inch = 1 mile

Coordinate System: North American Datum of 1983, Universal Transverse Mercator Zone 17N (NAD_1983_UTM_Zone_17N)

Last revision date: September 2025
Road data as of: January 2025

For further details please contact:
West Virginia Department of Transportation
Information Technology Division
Mapping Service Unit
1900 Kanawha Blvd., East, Building 5
Charleston, WV 25305
(304) 352-0735