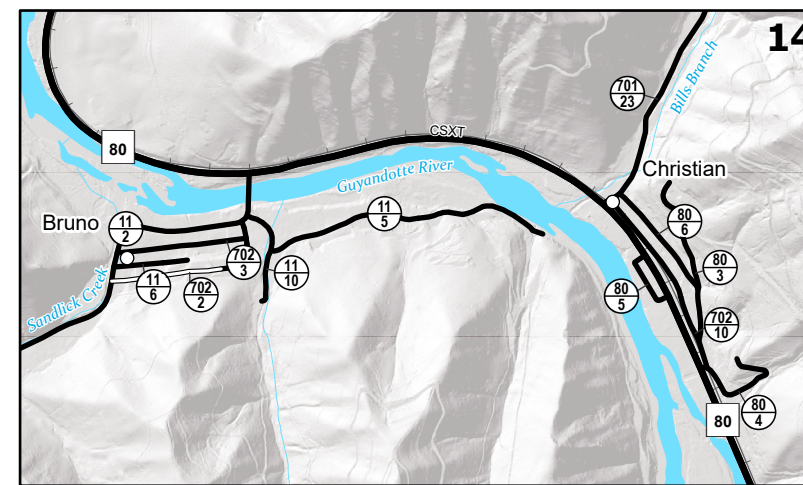


- Highway Sign Systems**
- Interstate Route
  - US Route
  - WV State Route
  - County Route
  - State Park and Forest Route
  - Federal Aid Non-State (FANS)
  - Home Access Route (HARP)
  - Other Non-State Streets
- Hydrologic Features**
- Lake or Pond
  - Intermittent Water
  - Rivers
  - Streams
  - Lock or Dam
- Roadway Surface Types**
- Primitive
  - Unimproved
  - Soil Surface - Dirt
  - Gravel or Stone
  - Paved
- Other Transportation Facilities**
- Railroad
  - Rail Trail
  - Tunnel
  - Airport Runway
  - Interstate Exit
- Functional Classes**
- Expressway
  - Trunkline
  - Feeder
- Public Service Points**
- County Seat
  - Populated Place
  - District HQ
  - County/Local HQ
  - Rest Area
  - Park & Ride
  - K-8 School
  - High School
  - Higher Education
  - Hospital
  - County Courthouse
- Boundaries**
- State Boundary
  - County Boundary
  - Urban Area
  - Incorporated Area
  - Tax District
  - National Park
  - National Forest
  - National Wildlife Refuge
  - State Park or Forest
  - Wildlife Management Area
  - City or County Park

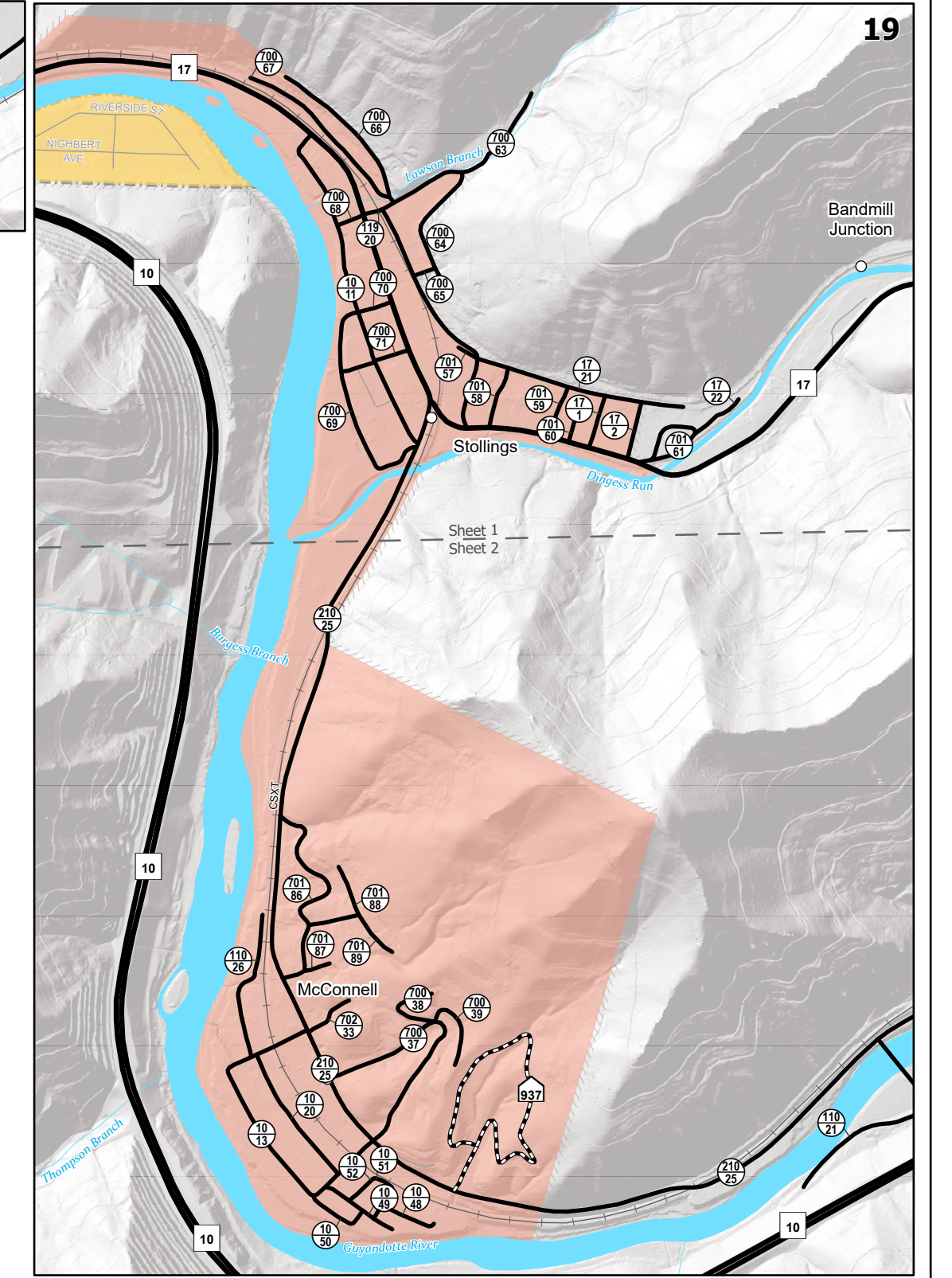


This map was developed by the West Virginia Department of Transportation (WVDOT) Information Technology Division and is provided for general reference only. The WVDOT does not guarantee the accuracy, completeness, or currentness of any information presented and disclaims any warranties, whether expressed or implied. Users who rely on the information contained in this map do so at their own risk. The WVDOT and its agents will not be held liable for inaccurate, outdated, or otherwise erroneous information, or for damages arising, whether directly or indirectly, from use or misuse of this map or any data contained herein.

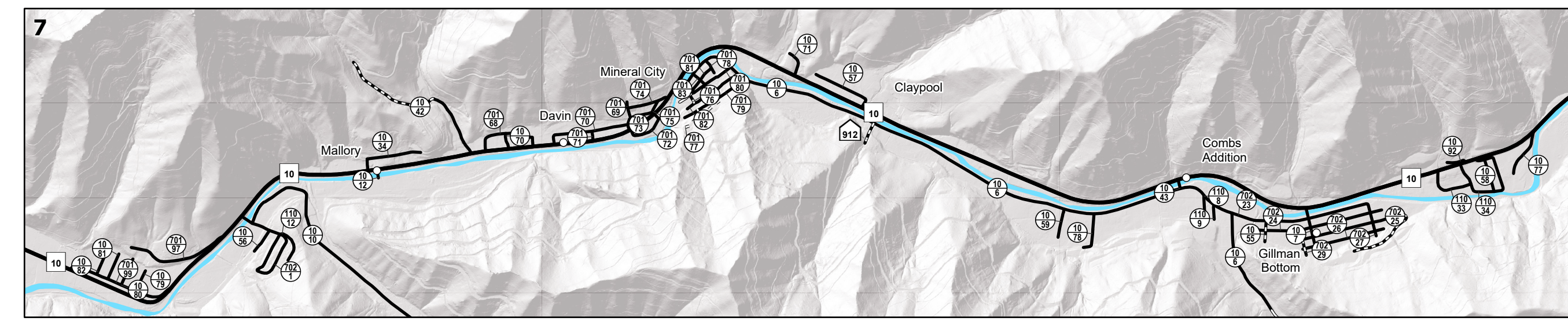
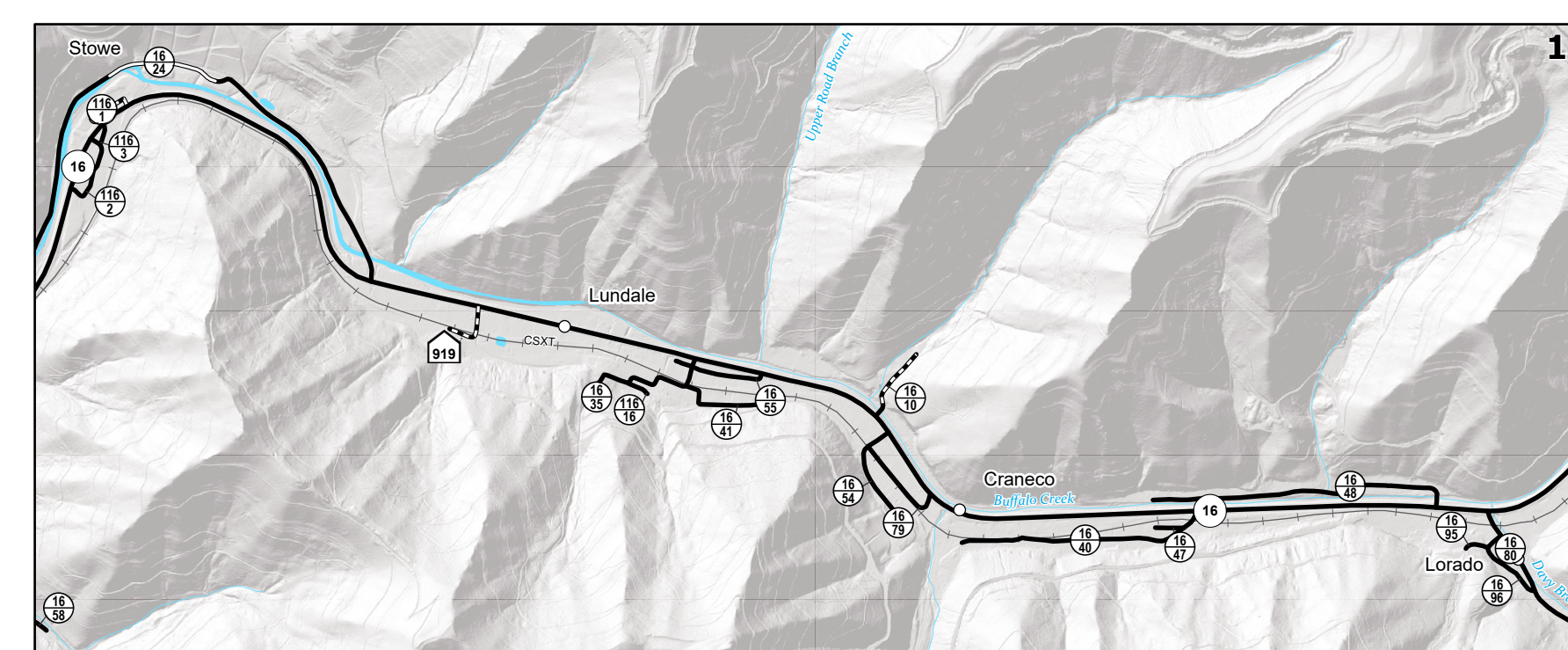
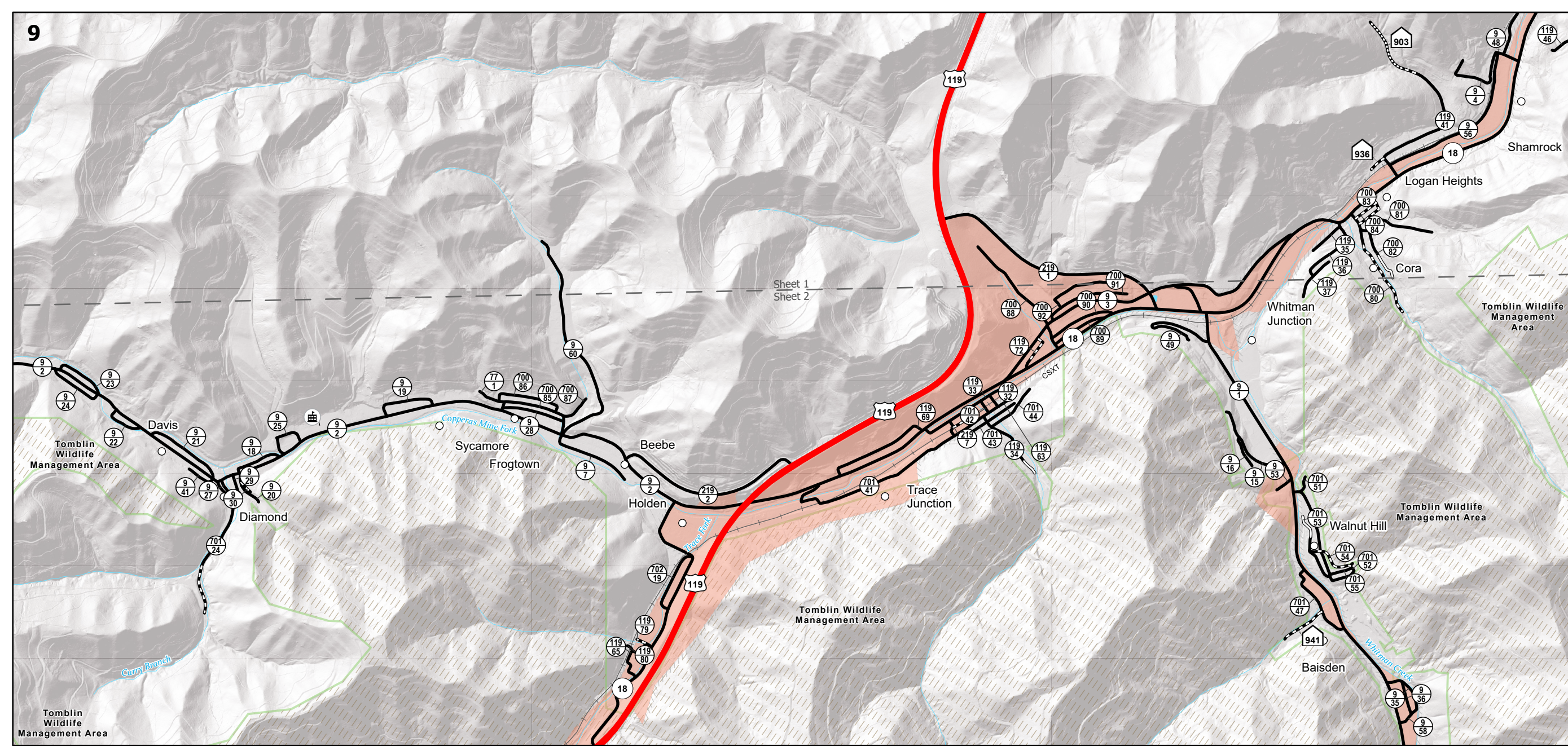
All routes are provided by West Virginia (WV) Department of Transportation. Urban Areas, corporation lines, and population data are from the U.S. Census Bureau for census years 2000 and 2010. Contributing sources include United States (U.S.) National Park Service, U.S. Forest Service, U.S. Geological Survey, WV Department of Environmental Protection, WV Division of Forestry, WV Division of Natural Resources, WV GIS Technical Center, WV Health Care Authority, WV Legislative Services, and WVU Natural Resource Analysis Center.

This map is an illustration and is not intended for use in direct mensuration of real features on the surface of the earth or any other engineering design. The size of objects and distances between them are exaggerated for ease of use only. This map does not contain all or even most of the features found on the face of the earth in any given location. It only depicts those features found in the legend within its geographic area. The intended use of this map is for planning and simple location of features to within several hundred feet of their correct position on the face of the earth.

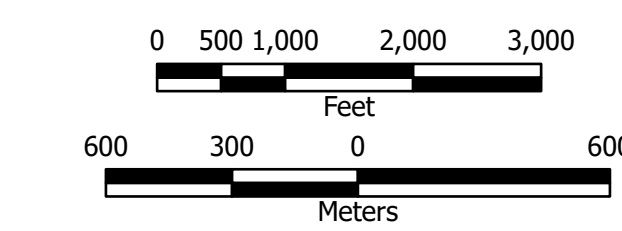
For further details please contact:  
 West Virginia Department of Transportation  
 Information Technology Division  
 Mapping Service Unit  
 1900 Kanawha Blvd. East, Building 5  
 Charleston, WV 25305  
 (304) 352-0735



SCALE OF INSETS 18 & 19



**GENERAL HIGHWAY MAP  
 LOGAN COUNTY INSETS  
 WEST VIRGINIA**  
 PREPARED BY  
 WEST VIRGINIA DEPARTMENT OF  
 TRANSPORTATION  
 INFORMATION TECHNOLOGY DIVISION  
 IN COOPERATION WITH  
 US DEPARTMENT OF TRANSPORTATION  
 FEDERAL HIGHWAY ADMINISTRATION



SCALE OF INSETS 7-17

Coordinate System: North American Datum of 1983, Universal Transverse Mercator Zone 17N (NAD\_1983\_UTM\_Zone\_17N)  
 Last revision date: September 2025  
 Road data as of: January 2025