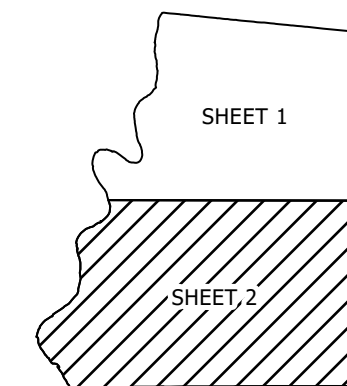
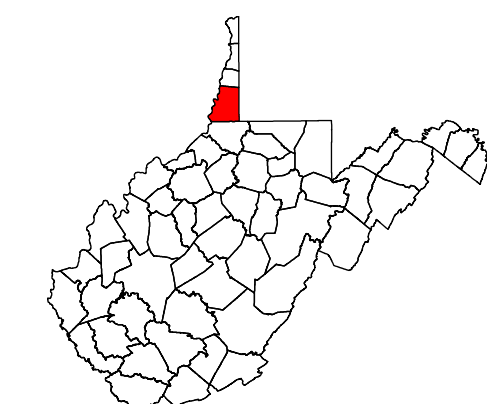


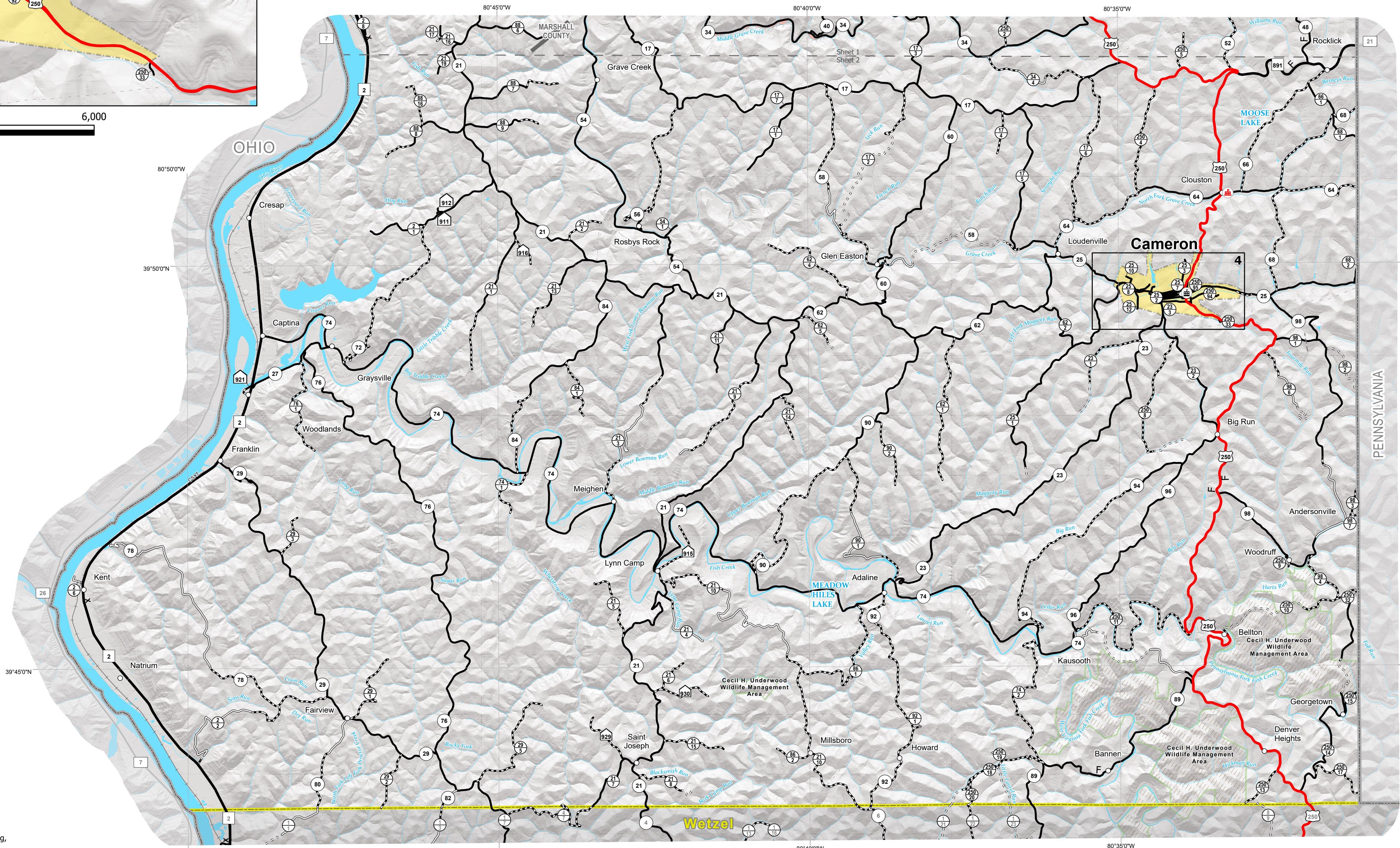
SCALE OF INSET



KEY MAP OF SHEETS



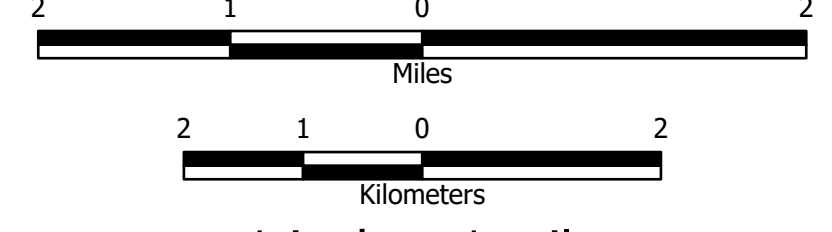
KEY MAP OF COUNTIES



- | | | |
|--|---|--|
| <p>Roadway Surface Types</p> <ul style="list-style-type: none"> ----- Primitive ----- Unimproved ----- Soil Surface - Dirt ----- Gravel or Stone ----- Paved <p>Highway Sign Systems</p> <ul style="list-style-type: none"> Interstate Route US Route WV State Route County Route State Park and Forest Route Federal Aid Non-State (FANS) Home Access Route (HARP) Other Non-State Streets <p>Functional Classes</p> <ul style="list-style-type: none"> X Expressway T Trunkline F Feeder | <p>Hydrologic Features</p> <ul style="list-style-type: none"> Lake or Pond Intermittent Water Rivers Streams Lock or Dam <p>Boundaries</p> <ul style="list-style-type: none"> State Boundary County Boundary Urban Area Incorporated Area Tax District National Park National Forest National Wildlife Refuge State Park or Forest Wildlife Management Area City or County Park | <p>Public Service Points</p> <ul style="list-style-type: none"> County Seat Populated Place District HQ County/Local HQ Rest Area Park & Ride K-8 School High School Higher Education Hospital County Courthouse <p>Other Transportation Facilities</p> <ul style="list-style-type: none"> Railroad Rail Trail Tunnel Airport Runway Interstate Exit |
|--|---|--|

GENERAL HIGHWAY MAP MARSHALL COUNTY WEST VIRGINIA

PREPARED BY
WEST VIRGINIA DEPARTMENT OF TRANSPORTATION
INFORMATION TECHNOLOGY DIVISION
IN COOPERATION WITH
US DEPARTMENT OF TRANSPORTATION
FEDERAL HIGHWAY ADMINISTRATION



1 inch = 1 mile

Coordinate System: North American Datum of 1983, Universal Transverse Mercator Zone 17N (NAD_1983_UTM_Zone_17N)

Last revision date: September 2025
Road data as of: January 2025

For further details please contact:
West Virginia Department of Transportation
Information Technology Division
Mapping Service Unit
1900 Kanawha Blvd. East, Building 5
Charleston, WV 25305
(304) 352-0735

This map was developed by the West Virginia Department of Transportation (WVDOT) Information Technology Division and is provided for general reference only. The WVDOT does not guarantee the accuracy, completeness, or currentness of any information presented and disclaims any warranties, whether expressed or implied. Users who rely on the information contained in this map do so at their own risk. The WVDOT and its agents will not be held liable for inaccurate, outdated, or otherwise erroneous information, or for damages arising, whether directly or indirectly, from use or misuse of this map or any data contained herein.

All routes are provided by West Virginia (WV) Department of Transportation. Urban Areas, corporation lines, and population data are from the U.S. Census Bureau for census years 2000 and 2010. Contributing sources include United States (U.S.) National Park Service, U.S. Forest Service, U.S. Geological Survey, WV Department of Environmental Protection, WV Division of Forestry, WV Division of Natural Resources, WV GIS Technical Center, WV Health Care Authority, WV Legislative Services, and WVU Natural Resource Analysis Center.

This map is an illustration and is not intended for use in direct mensuration of real features on the surface of the earth or any other engineering design. The size of objects and distances between them are exaggerated for ease of use only. This map does not contain all or even most of the features found on the face of the earth in any given location. It only depicts those features found in the legend within its geographic area. The intended use of this map is for planning and simple location of features to within several hundred feet of their correct position on the face of the earth.