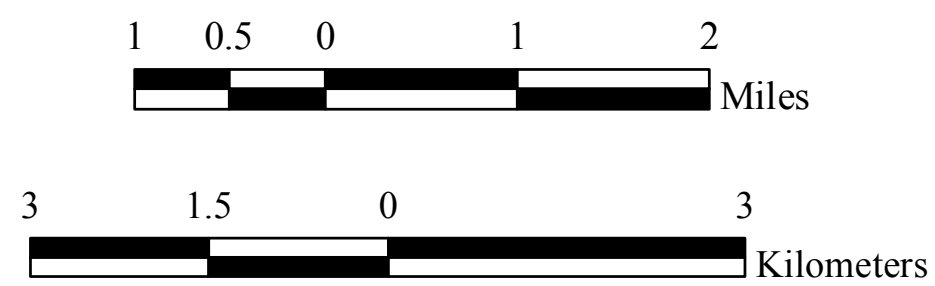
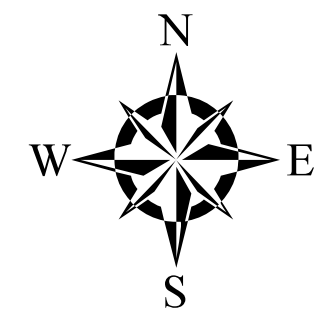
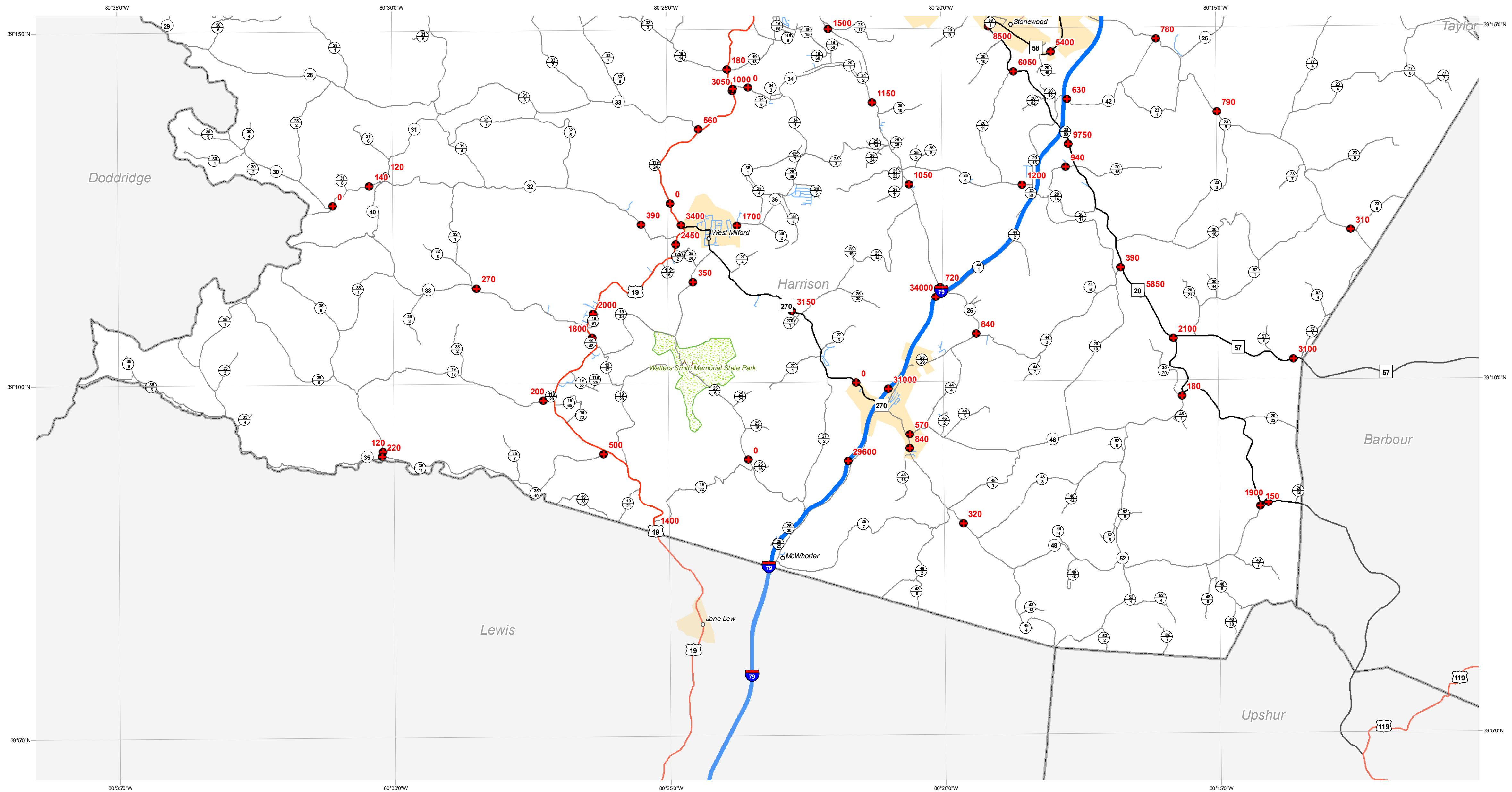


2009 AVERAGE DAILY TRAFFIC HARRISON COUNTY WEST VIRGINIA

PREPARED BY
WEST VIRGINIA DEPARTMENT OF TRANSPORTATION
PLANNING AND RESEARCH DIVISION
IN COOPERATION WITH
US DEPARTMENT OF TRANSPORTATION
FEDERAL HIGHWAY ADMINISTRATION

- Portable Counters
 - Permanent Counters
- Census Designated Places
Population
- 50,000 - 99,999
 - 10,000 - 49,999
 - less than 10,000
- Roadways
- Interstate
 - US Route
 - WV Route
 - County Route
 - State Park and Forest Roads
 - Federal Aid Non-State
 - HARP
- ▭ County Boundary
 - ▭ Incorporated Cities
 - ▭ National Parks
 - ▭ State Parks
 - ▭ National Forest
 - ▭ State Forest



1 inch = 1 mile

