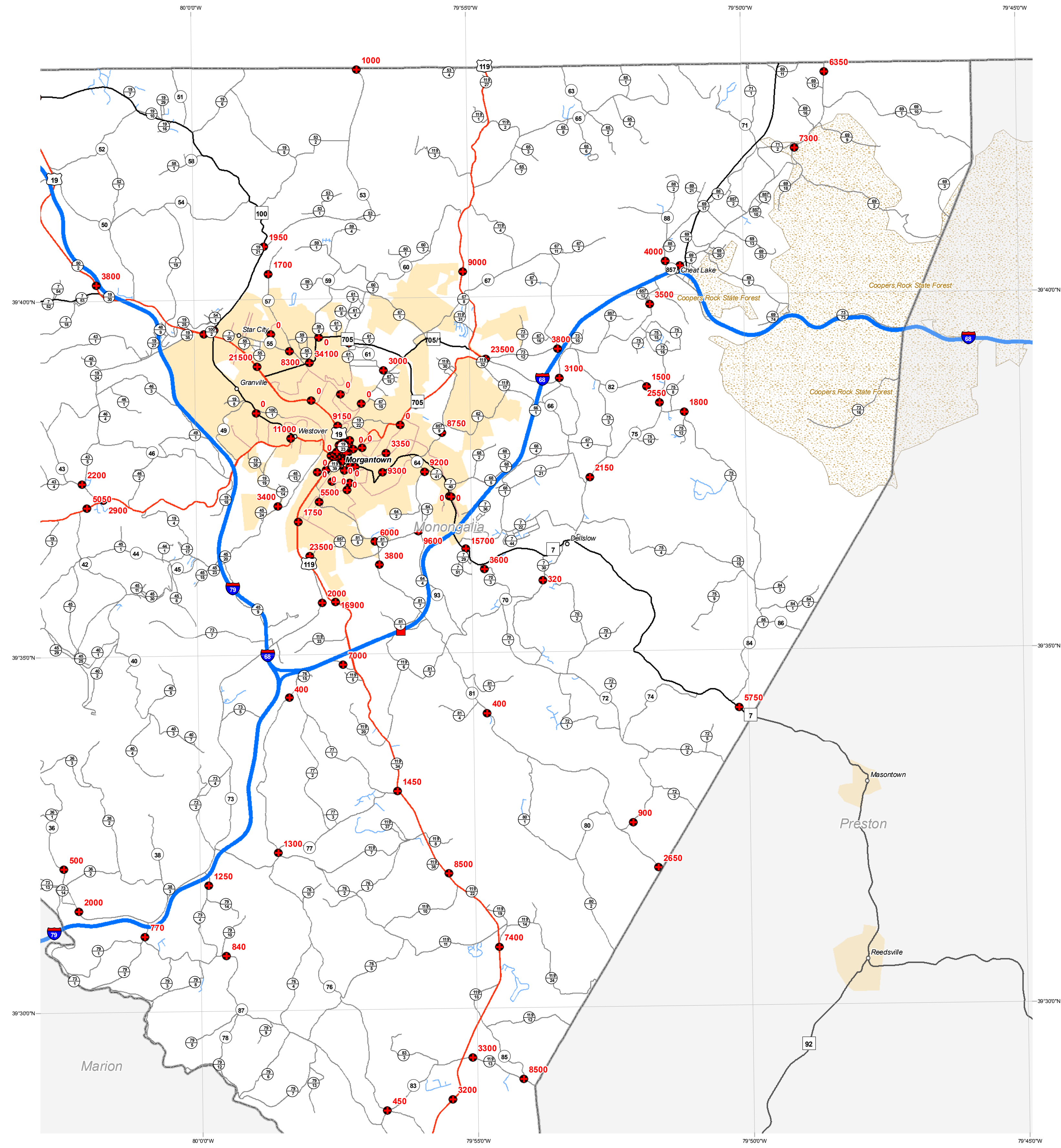
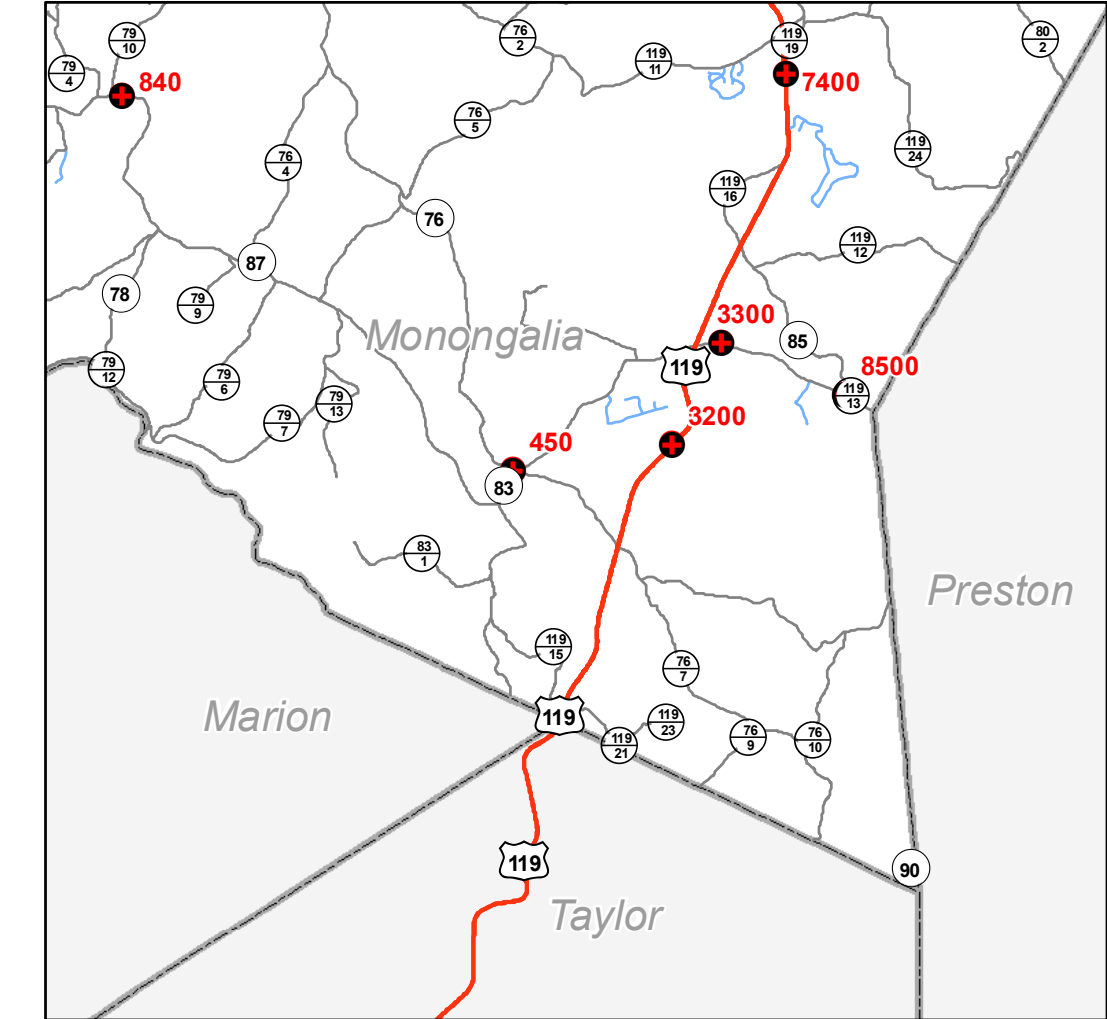
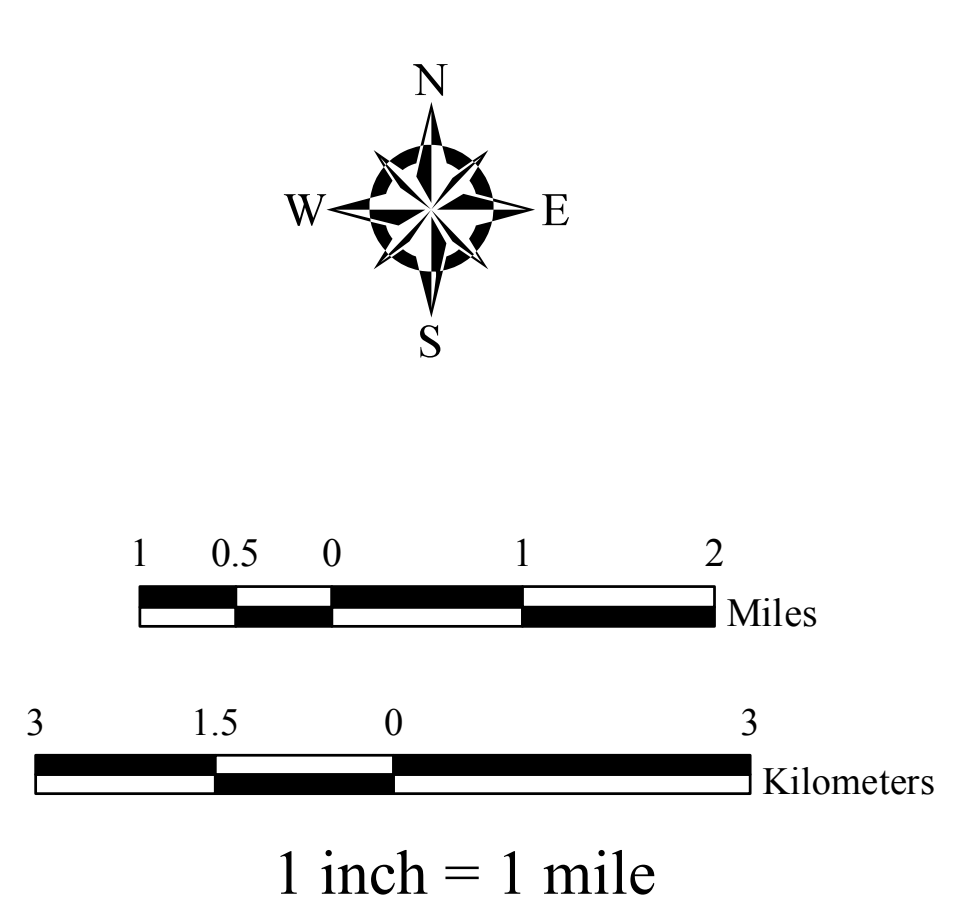
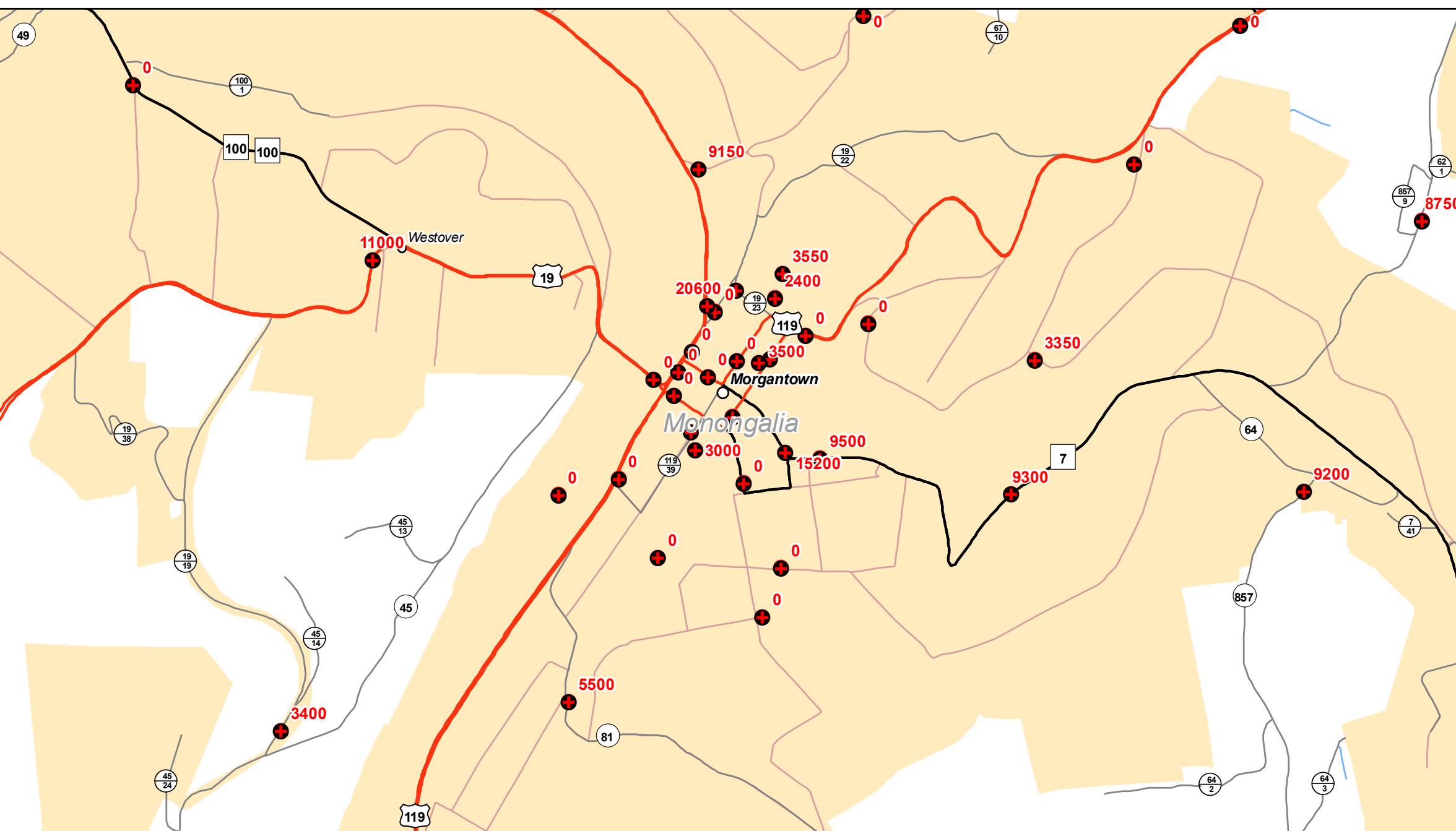


2009 AVERAGE DAILY TRAFFIC  
**MONONGALIA COUNTY**  
**WEST VIRGINIA**  
 PREPARED BY  
 WEST VIRGINIA DEPARTMENT OF TRANSPORTATION  
 PLANNING AND RESEARCH DIVISION  
 IN COOPERATION WITH  
 US DEPARTMENT OF TRANSPORTATION  
 FEDERAL HIGHWAY ADMINISTRATION



- Portable Counters
- Permanent Counters
- Census Designated Places Population
  - 50,000 - 99,999
  - 10,000 - 49,999
  - less than 10,000
- Roadways
  - Interstate
  - US Route
  - WV Route
  - County Route
  - State Park and Forest Roads
  - Federal Aid Non-State
  - HARP
- ▭ County Boundary
- ▭ Incorporated Cities
- ▭ National Parks
- ▭ State Parks
- ▭ National Forest
- ▭ State Forest

