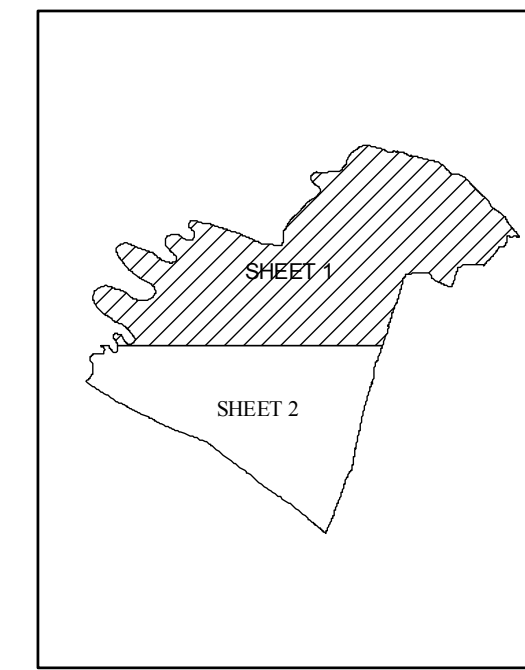
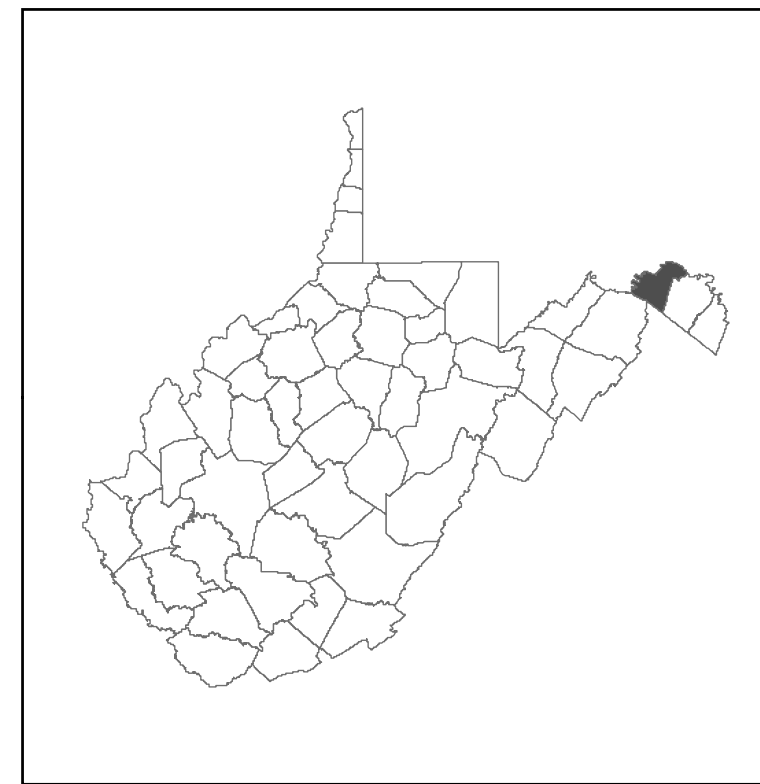


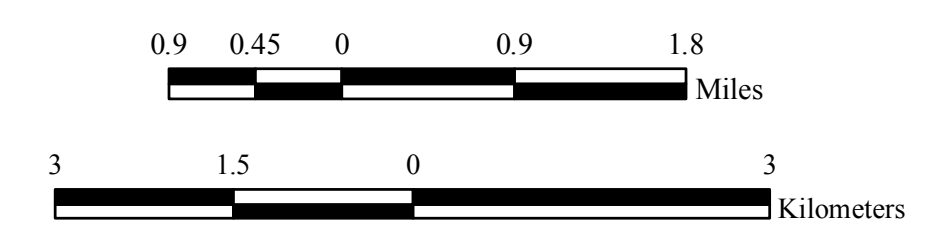
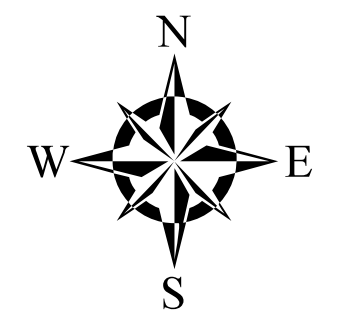
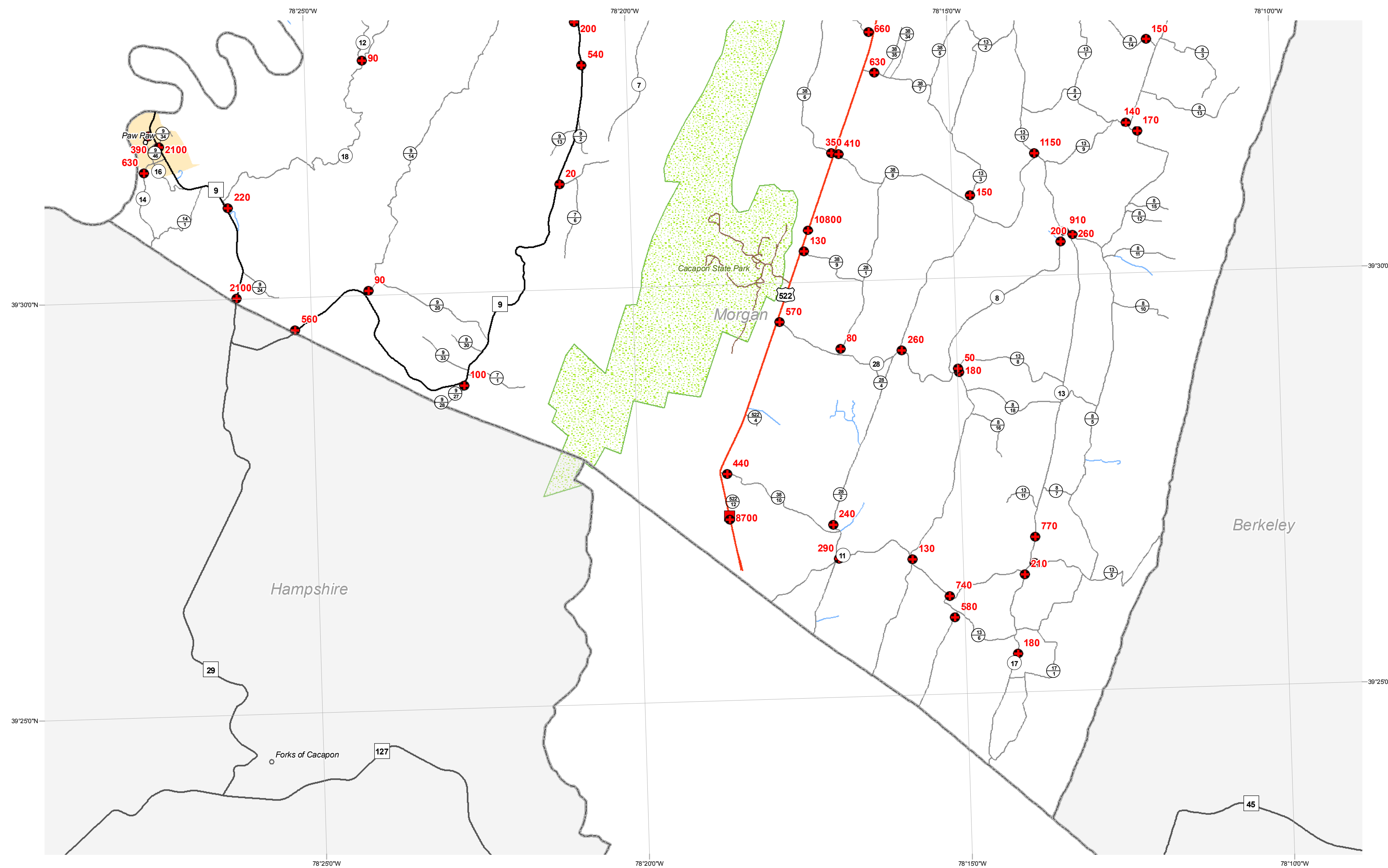
2009 AVERAGE DAILY TRAFFIC

MORGAN COUNTY WEST VIRGINIA

PREPARED BY
WEST VIRGINIA DEPARTMENT OF TRANSPORTATION
PLANNING AND RESEARCH DIVISION
IN COOPERATION WITH
US DEPARTMENT OF TRANSPORTATION
FEDERAL HIGHWAY ADMINISTRATION



- Portable Counters
- Permanent Counters
- Census Designated Places Population
 - 50,000 - 99,999
 - 10,000 - 49,999
 - less than 10,000
- Roadways
 - Interstate
 - US Route
 - WV Route
 - County Route
 - State Park and Forest Roads
 - Federal Aid Non-State
 - HARP
- County Boundary
- Incorporated Cities
- National Parks
- State Parks
- National Forest
- State Forest



1 inch = 1 mile